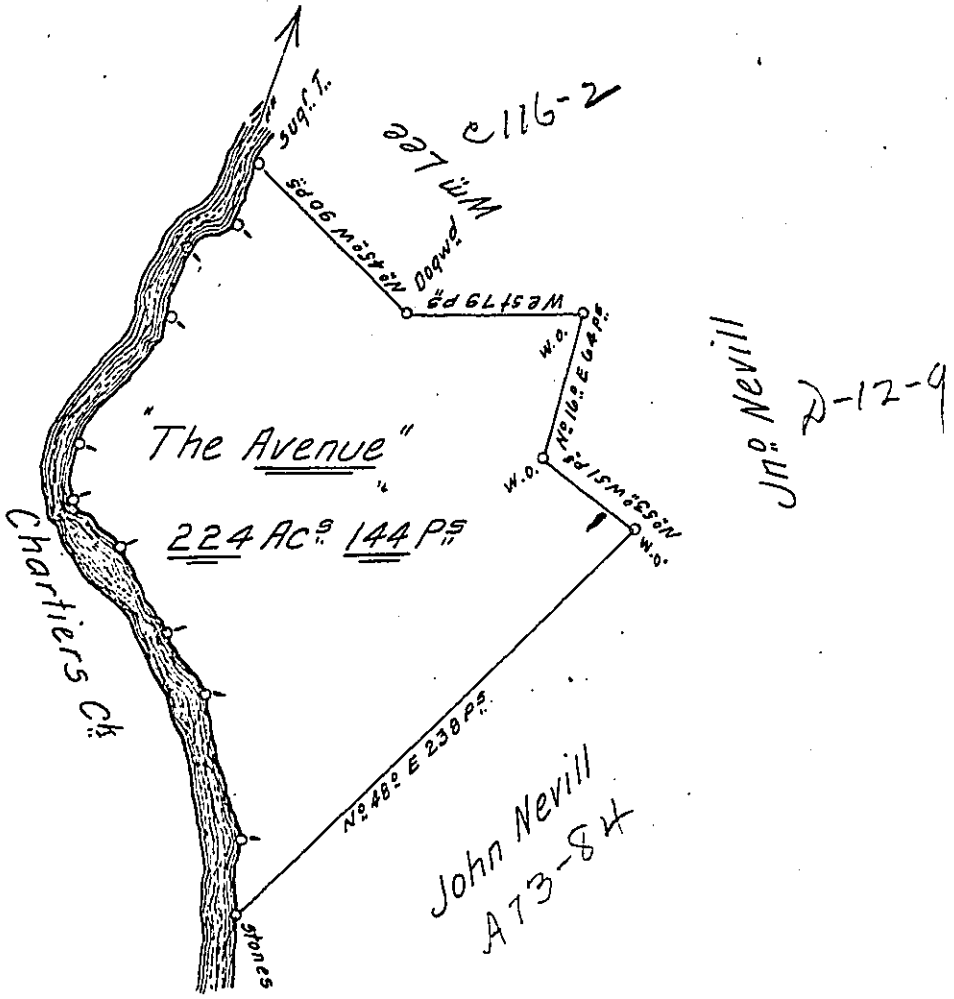


1920

Courses &c. up y^e Ck

| |
|--|
| S ^o 18 ^o W 29 P ^s |
| S ^o 67 W 23 D ^s |
| S ^o 12 W 30 D ^s |
| S ^o 37 W 65 D ^s |
| S ^o 5 ^o W 23 D ^s |
| S ^o 45 E 28 D ^s |
| S ^o 27 E 40 D ^s |
| S ^o 34 E 32 D ^s |
| S ^o 13 E 62 D ^s |
| S ^o 5 W 32 D ^s |

10 Stones



A Draught of a Survey called "The Avenue" situate on Chartiers Ck in Wash-
 ington County. contg 224 Ac^s 144 P^s and the usual Allow^{ce} for Highways
 &c. executed 2^d Feb^y 1787 in Pursu^{ce} of a Warrant granted to Presley Nevill
 for 212 Ac^s dated August 21st 1786.

Mat^w Ritchie D.S.

Jn^r Lukens Esq. S. Gen^l

IN TESTIMONY that the above is a copy of the original remaining on file in
 the Department of Internal Affairs of Pennsylvania, made
 conformably to an Act of Assembly approved the 16th day of
 February, 1833, I have hereunto set my Hand and caused
 the Seal of said Department to be affixed at Harrisburg,
 this sixteenth day of April 1908.

Henry Howard
 Secretary of Internal Affairs.